

[Subscribe](#)

[Past Issues](#)

[Translate ▼](#)

[RSS](#)

[Subscribe](#)

[Past Issues](#)

[Translate ▼](#)

[RSS](#)




Newsletter

[Subscribe](#)

[Past Issues](#)

[Translate ▼](#)

[RSS](#)

[Subscribe](#)

[Past Issues](#)

[Translate ▼](#)

[RSS](#)



Season's Greetings

[Subscribe](#)

[Past Issues](#)

[Translate ▼](#)

[RSS](#)



*& volunteers, we wish you a happy
& healthy holiday season!*

[Subscribe](#)

[Past Issues](#)

[Translate ▼](#)

[RSS](#)



[Subscribe](#)

[Past Issues](#)

[Translate ▼](#)

[RSS](#)



[Subscribe](#)

[Past Issues](#)

[Translate ▼](#)

[RSS](#)

BOARD NEWS

[Subscribe](#)

[Past Issues](#)

[Translate ▼](#)

[RSS](#)

board member, Andrew Karsgaard went along with 2 journalists; one from Niagara Escarpment magazine, whose article will be out next year and the

[Subscribe](#)

[Past Issues](#)

[Translate ▼](#)

[RSS](#)

[Subscribe](#)

[Past Issues](#)

[Translate ▼](#)

[RSS](#)

is thrilled to have him on our team. Andrew lives in Creemore and is interested

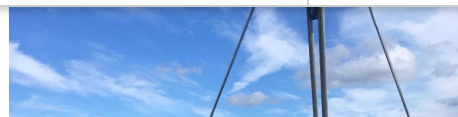
[Subscribe](#)

[Past Issues](#)

[Translate](#) ▼

[RSS](#)

very keen supporter of the preservation of lighthouses" He is an historian by education



[Subscribe](#)

[Past Issues](#)

[Translate ▼](#)

[RSS](#)

committee work for Charitable firms and believes our maritime heritage is worth



[Subscribe](#)

[Past Issues](#)

[Translate ▼](#)

[RSS](#)



[Subscribe](#)

[Past Issues](#)

[Translate ▼](#)

[RSS](#)

transfer of the lighthouse and designation as a Heritage Lighthouse under the

[Subscribe](#)

[Past Issues](#)

[Translate ▼](#)

[RSS](#)

tower. When the report is completed, we are to have a meeting with DFO via Zoom to discuss the next steps. We hope it is before Christmas.

[Subscribe](#)

[Past Issues](#)

[Translate ▼](#)

[RSS](#)

Burlington Canal Main Lighthouse was recently designated. This lighthouse is of similar design and built by the same contractor, John Brown, as the

[Subscribe](#)

[Past Issues](#)

[Translate ▼](#)

[RSS](#)

Earlier this year, the NLPS entered into talks with the Chippewas of Nawash regarding the transfer of the lighthouse. Under a spirit of mutual respect we

[Subscribe](#)

[Past Issues](#)

[Translate ▼](#)

[RSS](#)

working with the Chippewas of Nawash on a design for a dock that will allow safe access to the island while not damaging the existing fish habitat.

[Subscribe](#)

[Past Issues](#)

[Translate ▼](#)

[RSS](#)

"road blocks", we are ever optimistic for the transfer of ownership.

[Subscribe](#)

[Past Issues](#)

[Translate ▼](#)

[RSS](#)

but we raised **\$21,728.00**. *Thank you so much for your continued support!!*

[Subscribe](#)

[Past Issues](#)

[Translate ▼](#)

[RSS](#)

can do so securely here:



[Subscribe](#)

[Past Issues](#)

[Translate ▼](#)

[RSS](#)

We have great merchandise available on our website for purchase to support

[Subscribe](#)

[Past Issues](#)



[Translate ▼](#)

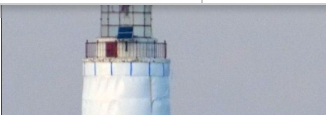
[RSS](#)

[Subscribe](#)

[Past Issues](#)

[Translate ▼](#)

[RSS](#)



Robert Square - **Vice Chairman/Government Liaison**

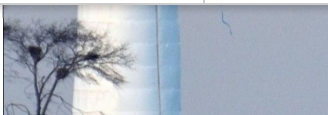
Pat Anstett - **Secretary**

[Subscribe](#)

[Past Issues](#)

[Translate ▼](#)

[RSS](#)



Andrew Karsgaard - **Director**

[Subscribe](#)

[Past Issues](#)

[Translate ▼](#)

[RSS](#)



[Subscribe](#)

[Past Issues](#)

[Translate ▼](#)

[RSS](#)

[Subscribe](#)

[Past Issues](#)

[Translate ▼](#)

[RSS](#)

Subscribe

Past Issues

Translate ▼

RSS

Want to change how you receive these emails?
You can [update your preferences](#) or [unsubscribe from this list](#)

[Subscribe](#)

[Past Issues](#)

[Translate ▼](#)

[RSS](#)



[Subscribe](#)

[Past Issues](#)

[Translate ▼](#)

[RSS](#)